

Prince Alfred Street, Gosport,  
Hampshire, PO12 1QH

£175,000



Middle Terraced House

Two Reception Rooms

PVCu Double Glazing

Garden

In Our Opinion, A Suitable First Time  
Purchase

Two Bedrooms

Bathroom With White Suite

Gas Central Heating

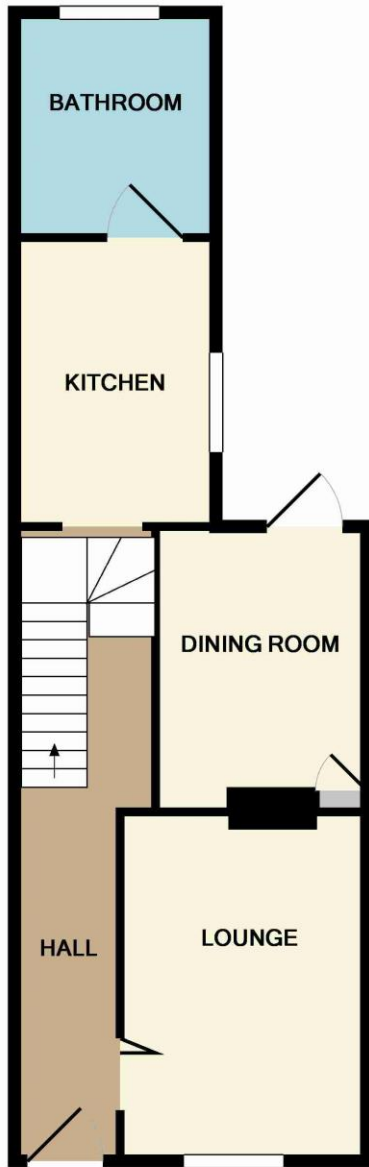
Located Near to Stoke Road & Its Facilities

**023 9258 5588**

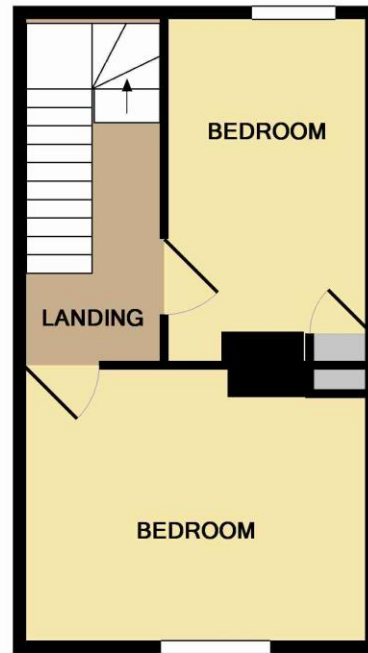
6 Stokesway, Stoke Road, Gosport, Hants, PO12 1PE

Email: [office@dimon-estate-agents.co.uk](mailto:office@dimon-estate-agents.co.uk)

To view all our properties visit:  
[www.GosportProperty.com](http://www.GosportProperty.com)



GROUND FLOOR



1ST FLOOR

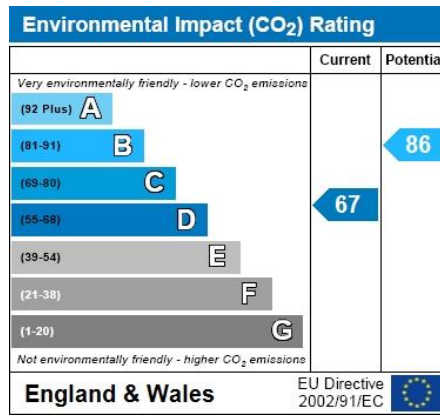
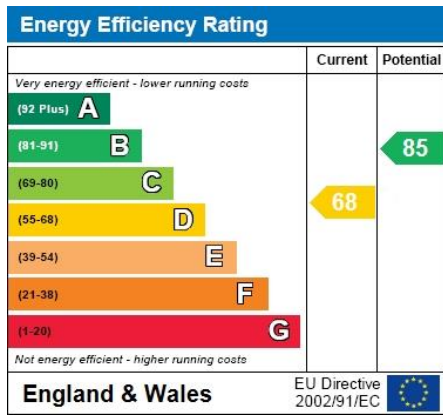
Whilst every attempt has been made to ensure the accuracy of the floor plan contained here, measurements of doors, windows, rooms and any other items are approximate and no responsibility is taken for any error, omission, or mis-statement. This plan is for illustrative purposes only and should be used as such by any prospective purchaser. The services, systems and appliances shown have not been tested and no guarantee as to their operability or efficiency can be given  
 Made with Metropix ©2012



**SELLING YOUR OWN PROPERTY IN GOSPORT?  
 WE ARE A FAMILY RUN BUSINESS SELLING HOMES IN GOSPORT FOR 50 YEARS  
 AND WOULD WELCOME THE OPPORTUNITY TO BE CHOSEN AS YOUR ESTATE AGENT**

Entrance Hall	PVCu front door, dado rail, coved ceiling with ceiling rose, laminate flooring, understairs meter cupboard, ornamental arch.
Lounge	10'11" (3.33m) x 10'3" (3.12m) PVCu double glazed window, cast iron fireplace, coved ceiling, ceiling rose, radiator.
Dining Room	9'0" (2.74m) x 8'0" (2.44m) Dado rail, PVCu double glazed door to garden, coved ceiling, cast iron fireplace, laminate flooring, built in cupboard, radiator.
Kitchen	10'2" (3.1m) x 7'0" (2.13m) 1 1/2 bowl stainless steel sink unit, white fronted wall and base units with worksurface over, built-in oven and 4 ring electric hob with cooker extractor canopy over, PVCu double glazed window, wall mounted gas central heating boiler, tiled splashbacks, coved ceiling, space for fridge/freezer, Georgian style glazed door to hallway.
Bathroom	8'11" (2.72m) x 6'0" (1.83m) Panelled bath with mixer tap and shower attachment, folding screen, pedestal hand basin, low level W.C., ceramic tiled floor, tiled splashbacks, PVCu double glazed window, radiator, coved ceiling.
<b>ON THE 1ST FLOOR</b>	
Landing	PVCu double glazed window, spindled balustrade, coved ceiling.
Bedroom 1	13'6" (4.11m) x 10'11" (3.33m) PVCu double glazed window, radiator, fireplace, built in cupboard, coved ceiling.
Bedroom 2	9'9" (2.97m) Plus Recess x 8'1" (2.46m) PVCu double glazed window, cast iron fireplace, coved ceiling, built in cupboard, radiator.
<b>OUTSIDE</b>	
Front Forecourt	With wall and timber gate, laid to slate chippings.
Rear Garden	With path and flower borders, area laid to gravel, paved patio.





Full Energy Performance Certificate available upon request

Appointment		
Date:	Time:	Person Meeting:
<a href="#">Viewing Notes</a>		

These particulars, whilst believed to be accurate, are set out as a general outline for guidance and do not constitute any part of an offer or contract. Please note we have not tested any apparatus, fixtures, fittings, or services. Interested parties must undertake their own investigation into the working order of these items. All measurements are approximate. Floor Plans are obtained from a third party and may contain inaccuracies. Photographs are for guidance only and may change over the course of marketing. Information provided on lease terms, maintenance and ground rent have been provided by the vendor and you should ask your legal representative to confirm this information before exchanging contracts.