

North Close, Alverstoke, Gosport,
Hampshire, PO12 2PH

£275,000



Semi Detached House

Three Bedrooms

Sitting Room

Ground Floor Cloakroom & First Floor
Bathroom

Cul-De-Sac Location

Extended Accommodation

Lounge

Separate Dining Area

Garage & Off Road Parking

No Forward Chain

023 9258 5588

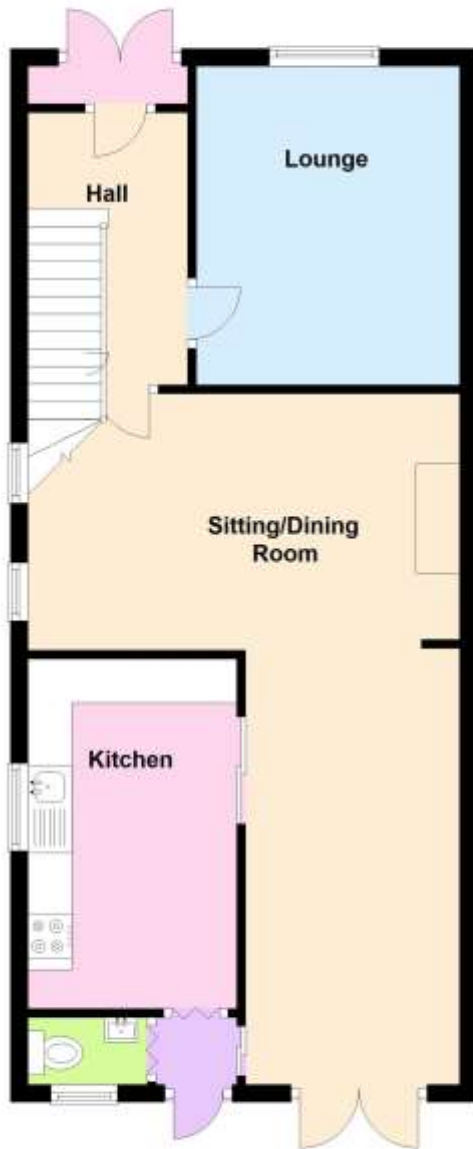
6 Stokesway, Stoke Road, Gosport, Hants, PO12 1PE

Email: office@dimon-estate-agents.co.uk

To view all our properties visit:

www.GosportProperty.com

Ground Floor



First Floor



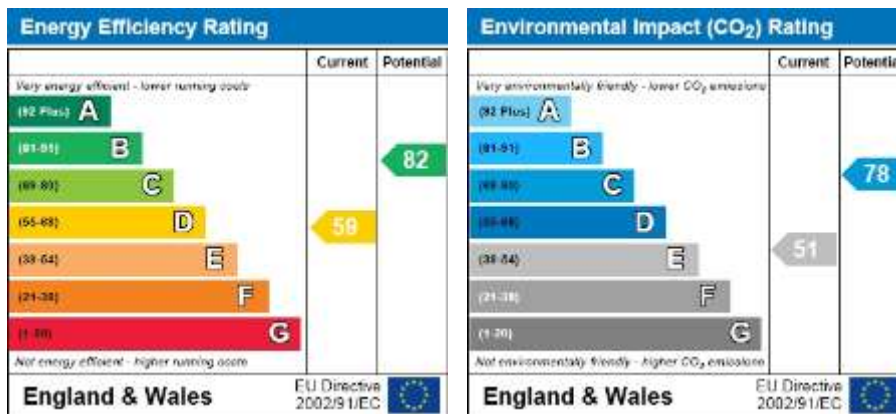
**SELLING YOUR OWN PROPERTY IN GOSPORT?
WE ARE A FAMILY RUN BUSINESS SELLING HOMES IN GOSPORT FOR 49 YEARS
AND WOULD WELCOME THE OPPORTUNITY TO BE CHOSEN AS YOUR ESTATE AGENT**

Entrance Porch	PVCu double glazed french doors, glazed inner door to
Entrance Hall	PVCu double glazed window, picture rail, radiator, small understairs cupboard.
Lounge	11'11" (3.63m) x 9'10" (3m) PVCu double glazed window, radiator, picture rail.
Sitting Room	16'5" (5m) x 9'11" (3.02m) 2 PVCu double glazed windows, stone fireplace and hearth with gas fire and back boiler, picture rail, square archway to:
Dining Room	16'2" (4.93m) x 8'4" (2.54m) PVCu double glazed french doors to garden, radiator, glazed sliding double doors to:
Kitchen	13'8" (4.17m) x 7'1" (2.16m) Single drainer stainless steel sink unit, wall and base cupboards, plumbing for washing machine, space for fridge/freezer, space for cooker, PVCu double glazed window.
Rear Lobby	With double glazed door to garden.
Cloakroom Off	With WC, hand basin, WC, PVCu double glazed window.
ON THE 1ST FLOOR	
Landing	PVCu double glazed window, access to loft space.
Bedroom 1	12'1" (3.68m) x 8'4" (2.54m) To Cupboards, built-in cupboards, PVCu double glazed window, radiator, picture rail, airing cupboard.
Bedroom 2	10'1" (3.07m) x 9'11" (3.02m) PVCu double glazed window, built-in cupboard.
Bedroom 3	8'10" (2.69m) x 6'0" (1.83m) PVCu double glazed window, radiator.
Bathroom	8'6" (2.59m) x 5'11" (1.8m) With panelled bath, hand basin, WC, PVCu double glazed window.
OUTSIDE	
Front Garden	With tarmaced driveway, front hedge.
Rear Garden	Of sunny aspect with decking area, lawn and borders, 2 sheds, timber side pedestrian gate.
Garage	With roller door and personal sliding door to side.



Directions

From our office proceed out of Gosport along Stoke Road and into the one way system following the road round into Bury Road. Proceed through the traffic lights taking the 1st turning left into Jellicoe Avenue, take the 2nd turning right into North Close, where the property will be found approximately ¾ of the way down on the left hand side.



Full Energy Performance Certificate available upon request

Appointment		
Date:	Time:	Person Meeting:
Viewing Notes		

These particulars, whilst believed to be accurate, are set out as a general outline for guidance and do not constitute any part of an offer or contract. Please note we have not tested any apparatus, fixtures, fittings, or services. Interested parties must undertake their own investigation into the working order of these items.

All measurements are approximate. Floor Plans are obtained from a third party and may contain inaccuracies. Photographs are for guidance only and may change over the course of marketing.

Information provided on lease terms, maintenance and ground rent have been provided by the vendor and you should ask your legal representative to confirm this information before exchanging contracts.